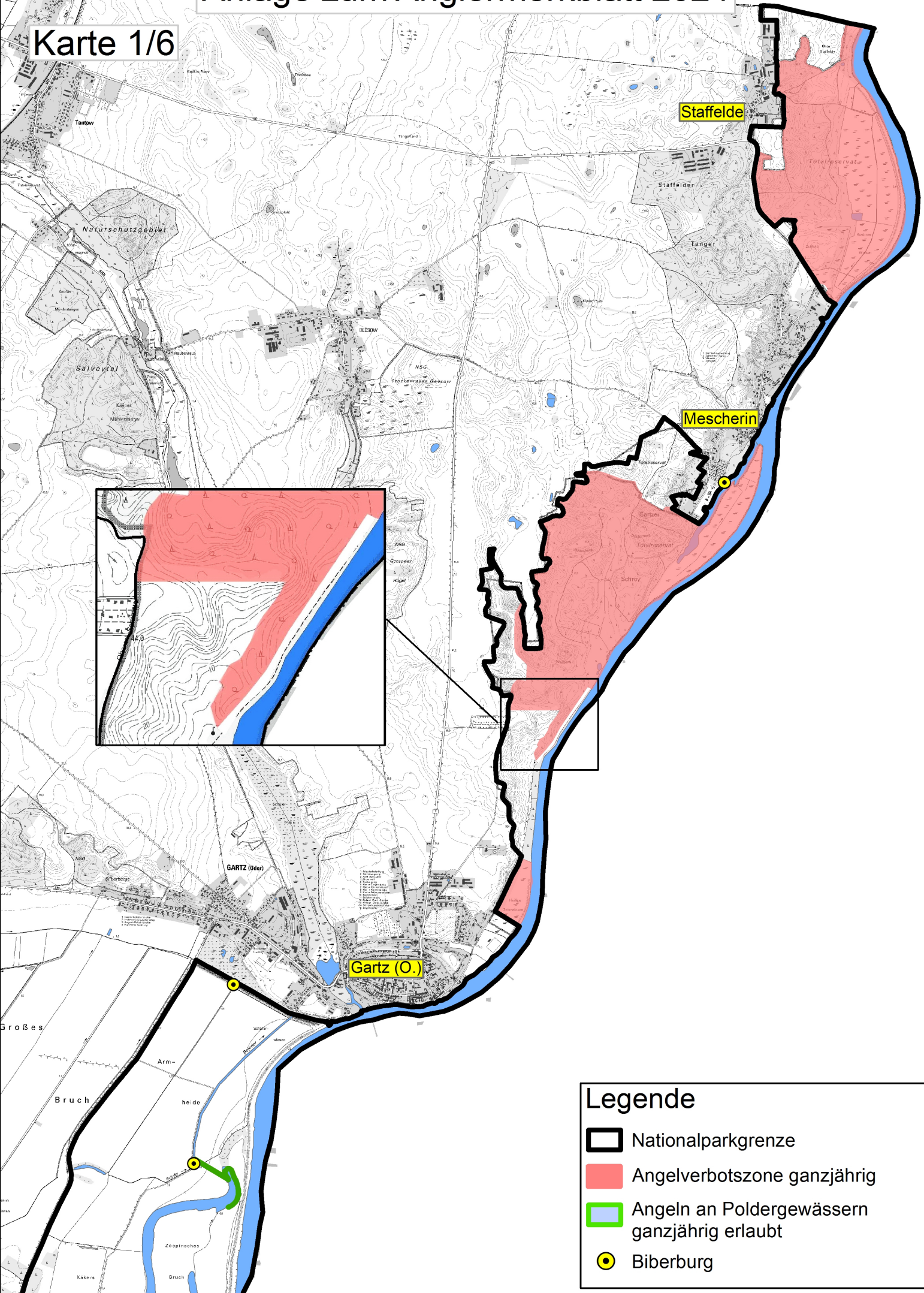






Anlage zum Anglermerkblatt 2024

Karte 1/6

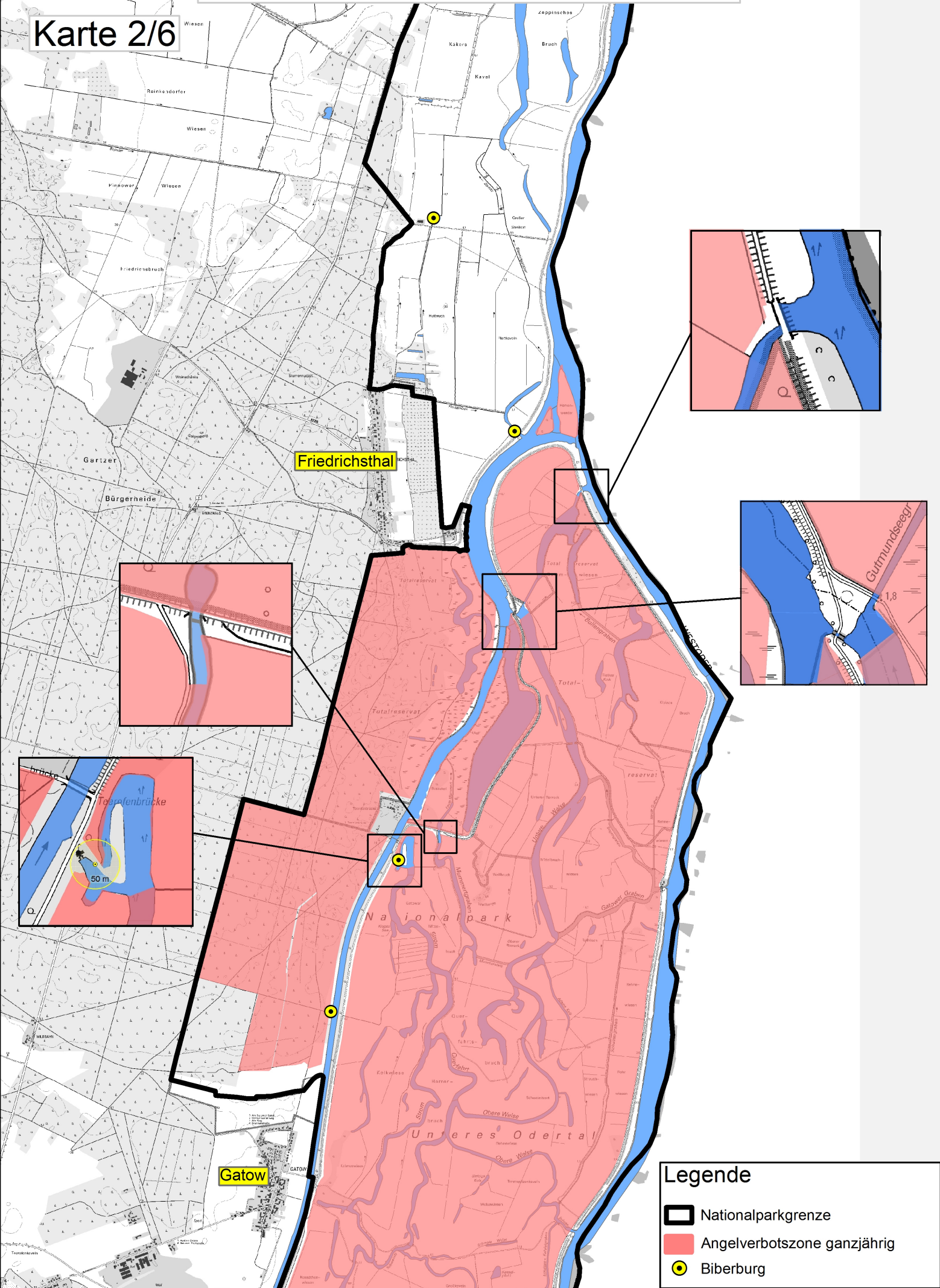


Legende

-  Nationalparkgrenze
-  Angelverbotszone ganzjährig
-  Angeln an Poldergewässern ganzjährig erlaubt
-  Biberburg

Anlage zum Anglermerkblatt 2024




Karte 2/6



Friedrichsthal

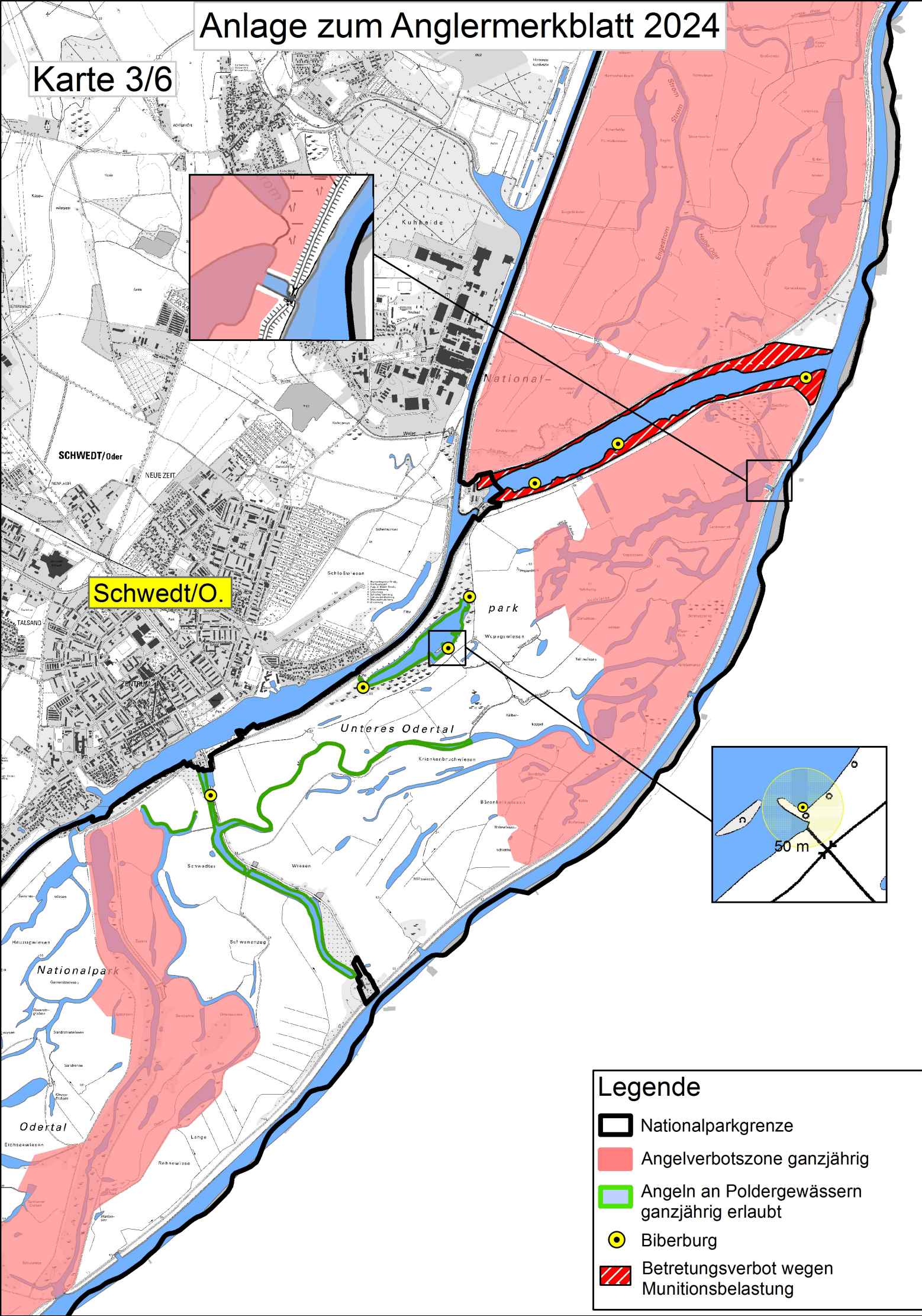
Gatow

Legende






-  Nationalparkgrenze
-  Anglerverbotszone ganzjährig
-  Biberburg

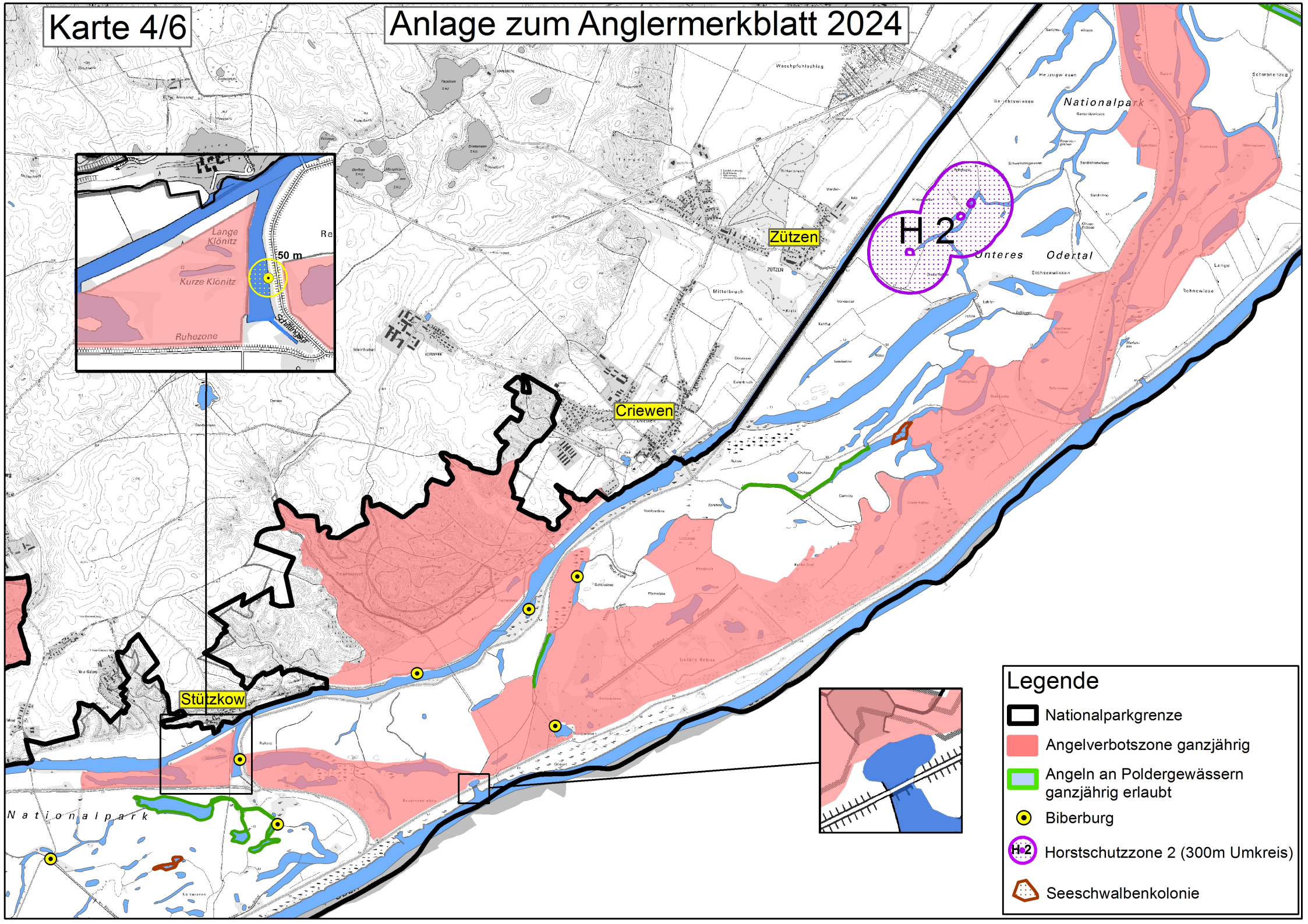
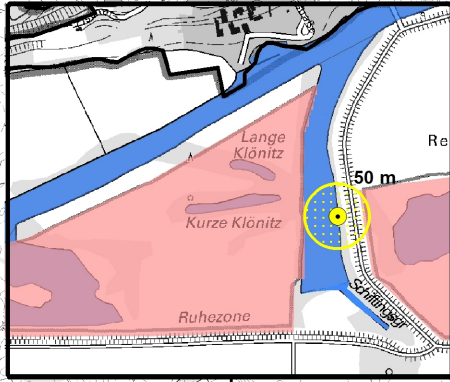
Anlage zum Anglermerkblatt 2024

Karte 3/6



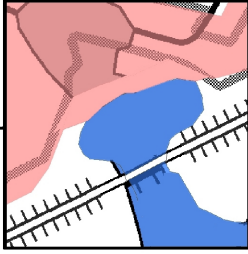
Legende

-  Nationalparkgrenze
-  Angelverbotszone ganzjährig
-  Angeln an Poldergewässern ganzjährig erlaubt
-  Biberburg
-  Betretungsverbot wegen Munitionsbelastung



Legende





- Nationalparkgrenze
- Angelverbotszone ganzjährig
- Angeln an Poldergewässern ganzjährig erlaubt
- Biberburg
- Horstschutzzone 2 (300m Umkreis)
- Seeschwalbenkolonie

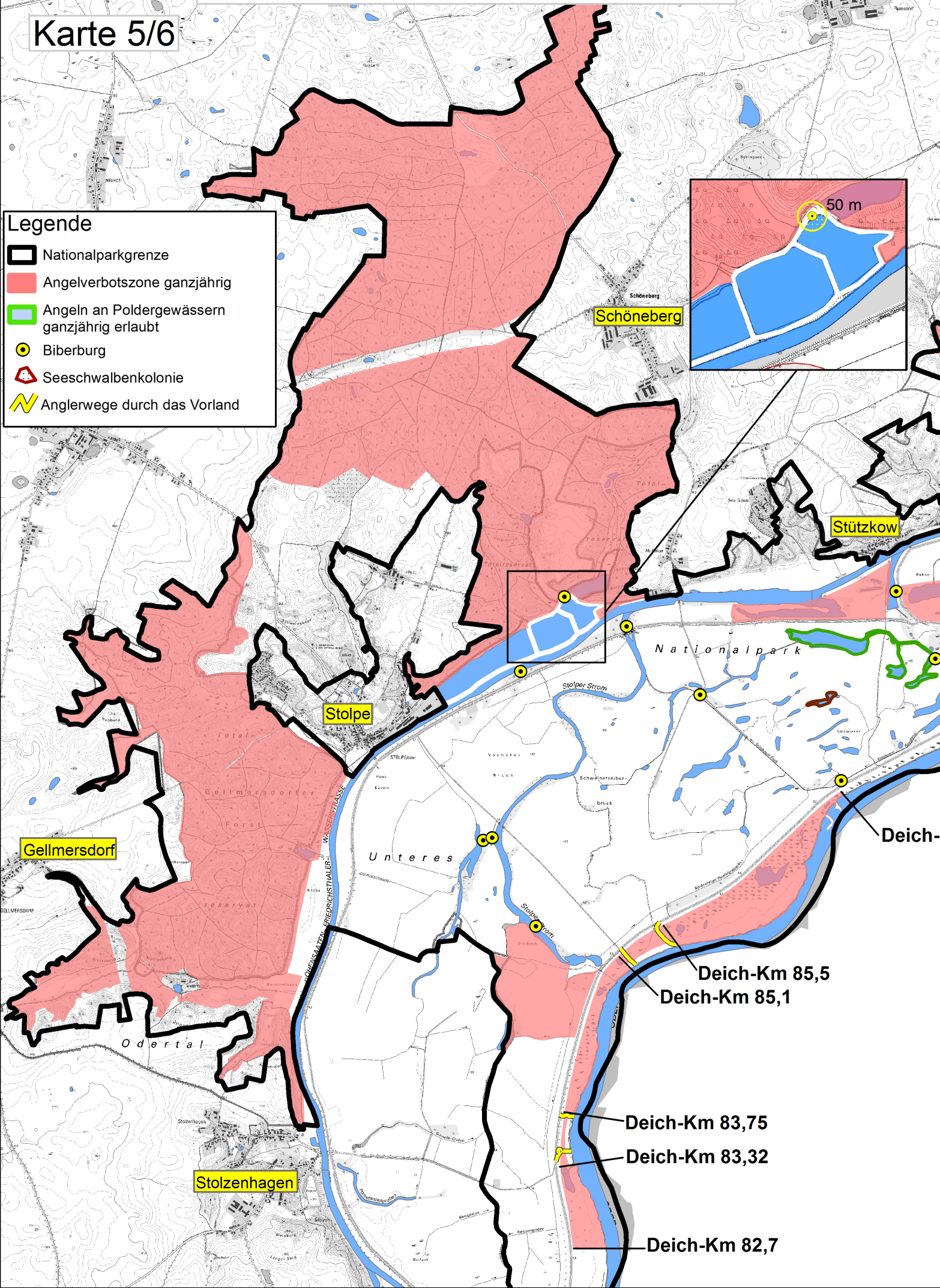
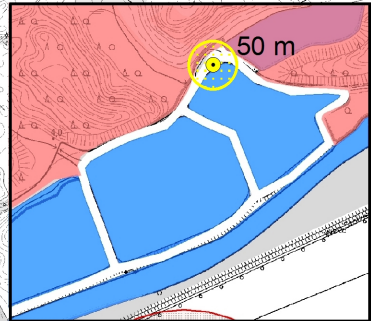


Anlage zum Anglermerkblatt 2024

Karte 5/6

Legende

-  Nationalparkgrenze
-  Angelverbotszone ganzjährig
-  Angeln an Poldergewässern ganzjährig erlaubt
-  Biberburg
-  Seeschwalbenkolonie
-  Anglerwege durch das Vorland



Deich-Km 85,5
Deich-Km 85,1

Deich-Km 83,75
Deich-Km 83,32

Deich-Km 82,7

Anlage zum Anglermerkblatt 2024

Karte 6/6

Stolpe

Deich-Km 87,2

Deich-Km 85,5
Deich-Km 85,1

Deich-Km 83,75

Deich-Km 83,32







Deich-Km 82,7

Deich-Km 81,6

Stolzenhagen

Lunow

Legende

-  Nationalparkgrenze
-  Angelverbotszone ganzjährig
-  Angeln an Poldergewässern ganzjährig erlaubt
-  Biberburg
-  Seeschwalbenkolonie
-  Anglerwege durch das Vorland